

#42006 Loft Apartment Kit

Step-by-step assembly instructions

Copyright miniatures.com 2024

PARTS:

Foundation
 Second Floor
 Large Window Wall
 Arch Wall
 Solid Wall
 Door Wall
 Small Window Wall
 Gap Filler
 Door with trim
 6-Light Window
 6-Light Window Trim
 6-Light Window Acrylic Pane
 30-Light Window
 30-Light Window Trim
 30-Light Window Acrylic Pane

SUPPLIES NEEDED:

Masking tape
 White glue (such as #1249 Weldbond)
 Damp clean cloth
 Exterior and interior finishes



GENERAL INSTRUCTIONS

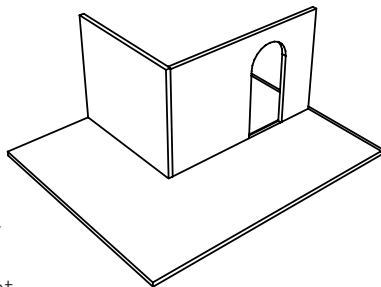
- Identify and inspect all parts using the Parts List and Parts Diagram.
- Read the directions completely before beginning the project.
- If possible, have a dedicated work area so that you are not unpacking, repacking, and moving the project from place to place.
- Choose a work surface that is level, clean, dry, and protected from glue spills.
- Do a dry fit, using masking tape to hold parts in place, to make sure everything fits together correctly before assembling permanently.

Assembly Instructions

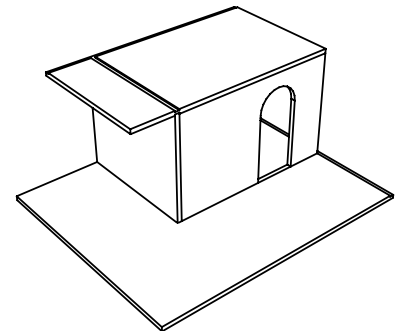
Tip: Plan the finishes for the interior and exterior at the dry-fit stage, before final/permanent assembly. It is easier to finish the panels as flat surfaces. Disassemble and finish as desired, then reassemble using glue.

Shell

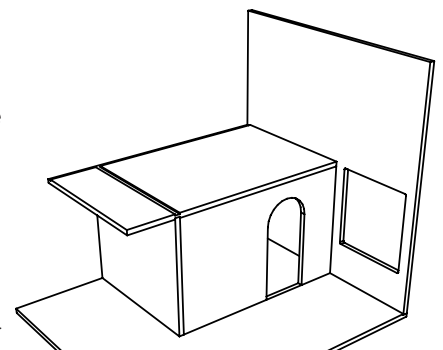
1. Place the **Foundation** flat on the work surface.
2. Glue the **Arch Wall** and the **Solid Wall** into their respective grooves and to each other. They are flush along the corner. The **Solid Wall** is slightly taller. The arch can be placed at the left or right.
3. Glue the **Gap Filler** into the groove on the floor in the arch opening.



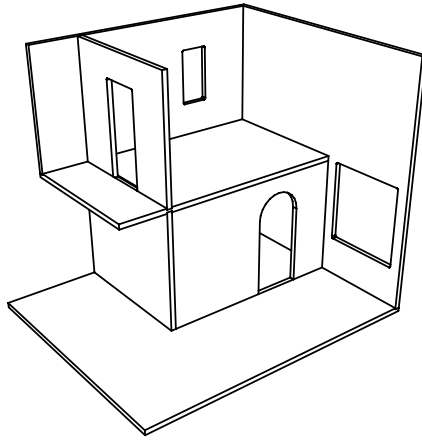
4. Glue the **Second Floor** to the top of the wall assembly. Orient it so that the surface with the groove and rabbet faces up. The groove on its underside receives the top of the **Solid Wall**.



5. Glue the **Large Window Wall** to the assembly. It rests in the rabbet on the **Foundation**. All joints are flush. The large window can be placed on the first or second level.



6. Glue the **Small Window Wall** in place. It rests in the rabbet on the **Second Floor**. All joints are flush. The small window can be placed at the left or right.
7. Glue the **Door Wall** into the **Second Floor** groove and against the **Small Window Wall**.



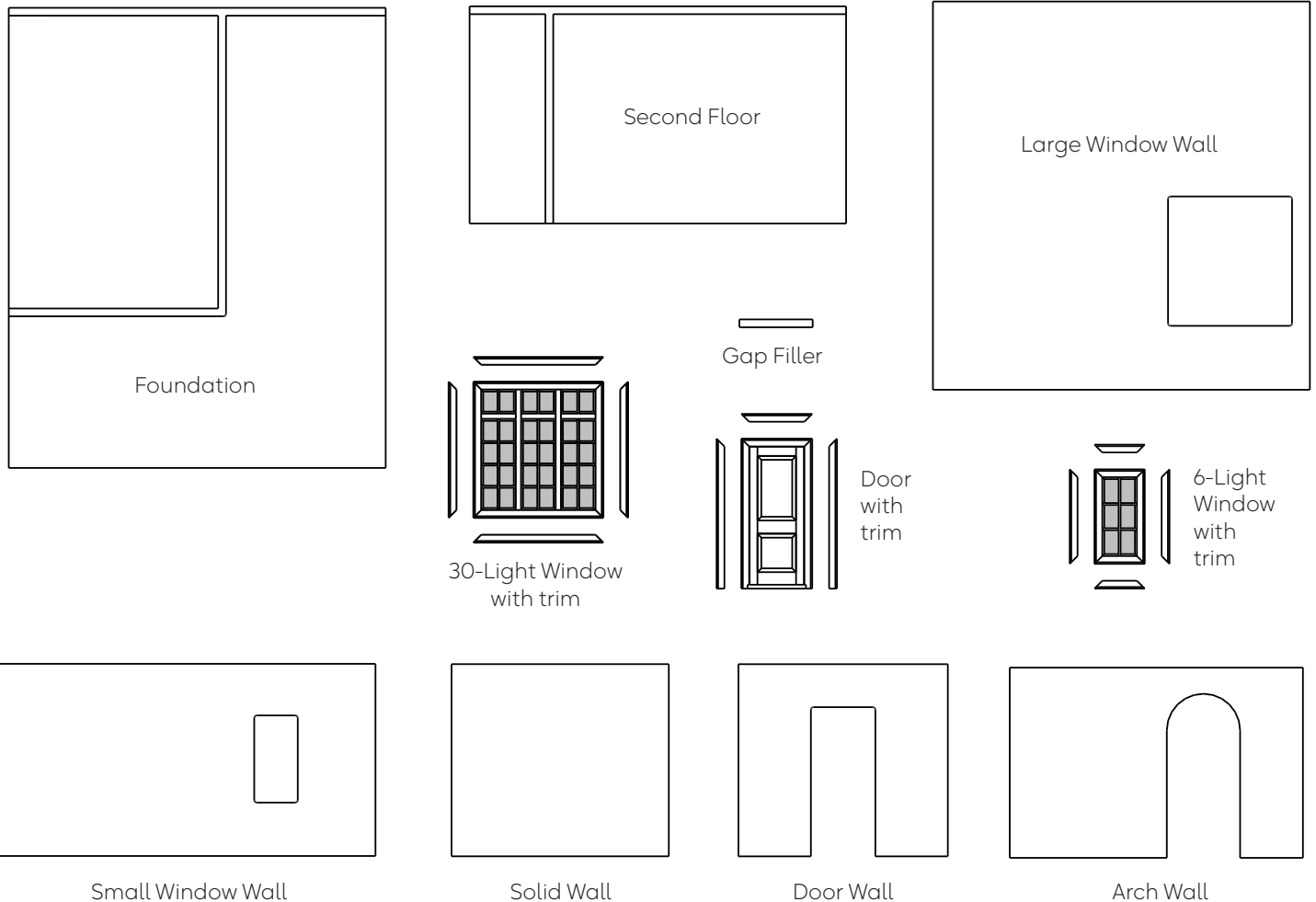
Decorate the walls before proceeding.

Windows & Doors

1. Paint or otherwise finish the windows and door.
2. Glue the windows and door into their openings.
3. Assemble, glue, and finish all window and door trim. Gluing the trim to graph paper and cutting it out when finished with a sharp blade can be helpful.
4. Place the acrylic panes into their corresponding window frames.
5. Glue all trim assemblies to their corresponding wall surfaces.

Assembly is now complete.

Parts Diagram



We hope you enjoy your Loft Apartment Dollhouse kit! For finishing tips and more information, visit miniatures.com. We would love to see how yours turns out; please send pictures to support@miniatures.com.

Questions? Contact us at support@miniatures.com or call 1.800.926.6464 (Mon-Fri 10:00 AM-5:00 PM ET).